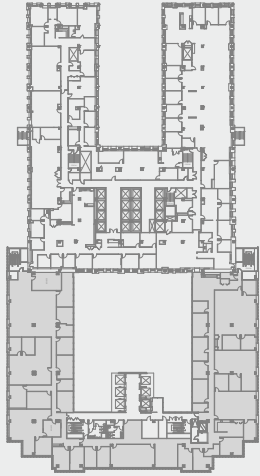


141 W JACKSON

— SUITE 2200A —

RSF 24,413

- RECEPTION AREA
- (1) BOARD ROOM
- (3) OPEN OFFICES
- (2) ENCLOSED AREAS, OPEN OFFICE, (2) PRIVATE OFFICE, PANTRY
- (1) ENCLOSED AREA, OPEN OFFICE,
- (2) PRIVATE OFFICE
- (1) ENCLOSED AREA, OPEN OFFICE,
- (1) PRIVATE OFFICE
- (6) PRIVATE SHARED OFFICES
- (12) PRIVATE OFFICE
- (1) LARGE OPEN OFFICE
- (3) IDF ROOMS



Christian A. Domin
Managing Director
cdomin@glenstar.com
312-212-5321

Chau Sweet
Associate Director
csweet@glenstar.com
312-605-9183

141 W. Jackson Blvd. Chicago. IL



OAKTREE



GLENSTAR

www.141wjackson.com

